



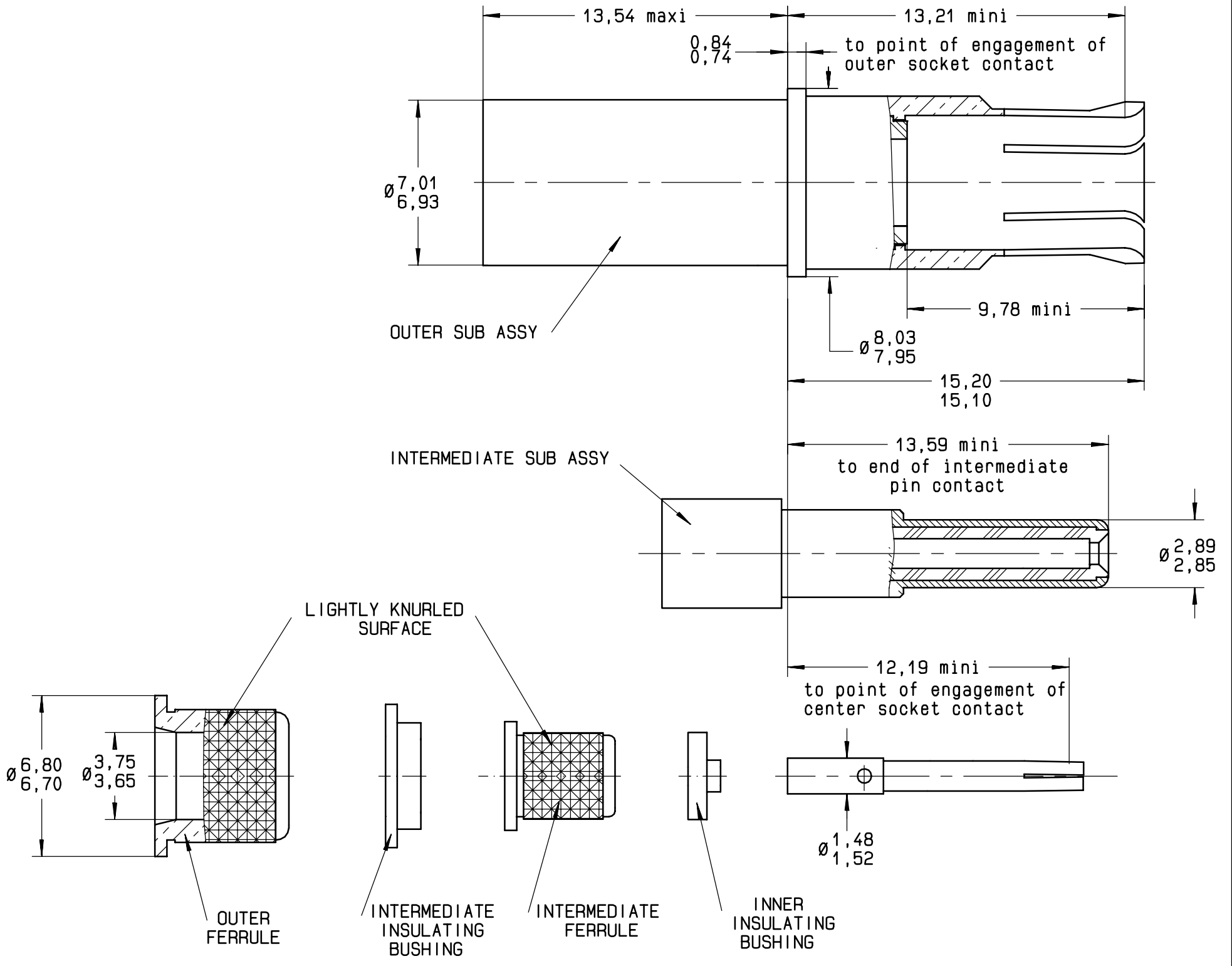
Series  
TCX

SIZE 8 CONCENTRIC TRIAX SOCKET CONTACT REAR RELEASE .REAR REMOVABLE  
CABLE PAN 6595

Issue:  
25 OCT.99

Page  
1 / 1

This information is given as an indication. In the continual goal to improve our products, we reserve the right to make any modifications judged necessary.



**MATERIALS:**

OUTER AND CENTER CONTACT: BERYLLIUM COPPER ALLOY PER QQ-C-530 HEAT TREATED FOR SPRING TINES, ANNEALED ON CRIMP BARREL

INTERMEDIATE CONTACT, INTERMEDIATE AND OUTER FERRULE: BRASS PER QQ-B-626

OUTER, CENTER DIELECTRIC AND INSULATING BUSHING: PTFE

**FINISHES: (ALL METAL PARTS)**

GOLD PLATE PER MIL-G-45204, TYPE II, GRADE C, CLASS 1 : 50 MICROINCHES OVER NICKEL PLATE PER QQ-N-290, CLASS 2

WIRING INSTRUCTIONS: SEE RP 54522

CREATION				
PEN: M990105391A				
NOM: BALDYROU				
DATE: 25 OCT.99				
APPR.:				
Issue	Revisions	Name	Approved	